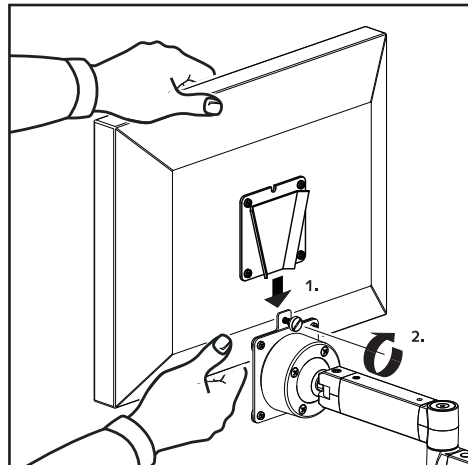
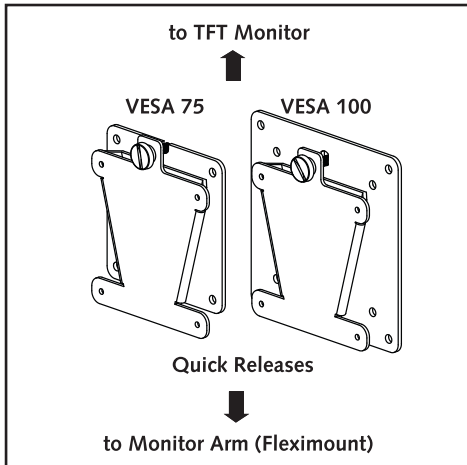
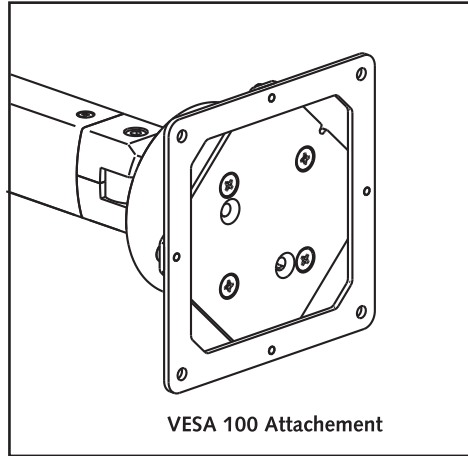
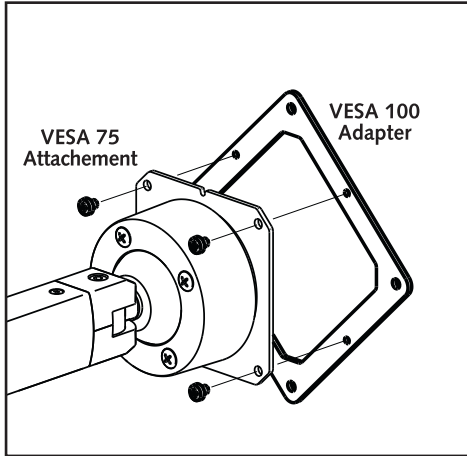
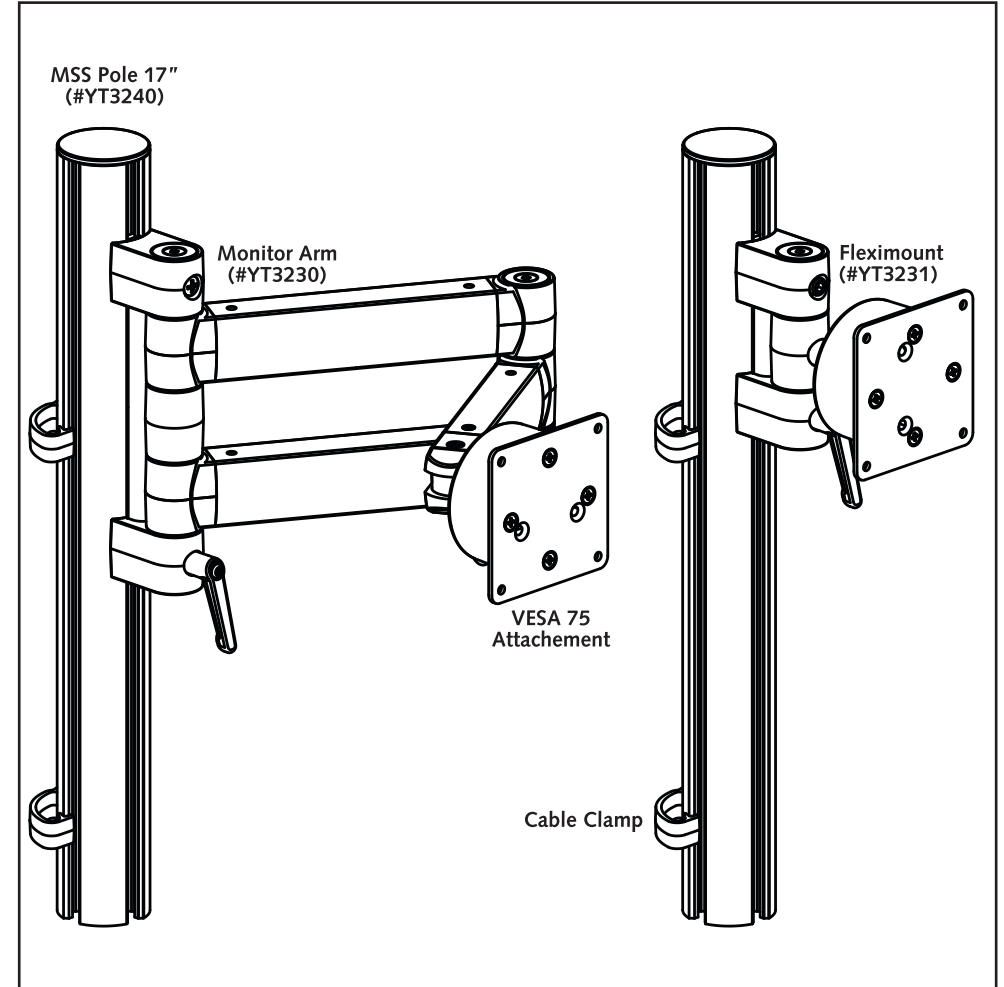


4. FROM VESA 75 TO VESA 100



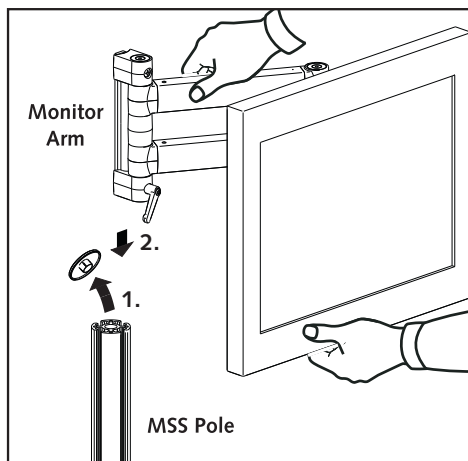
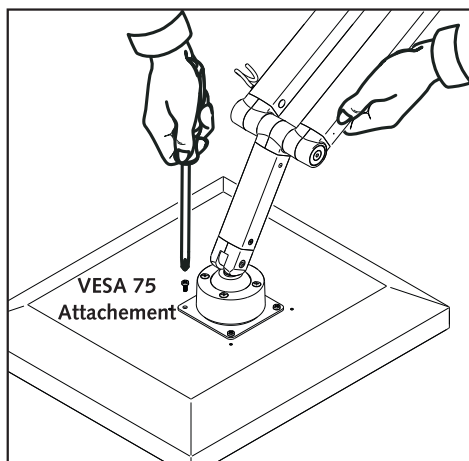
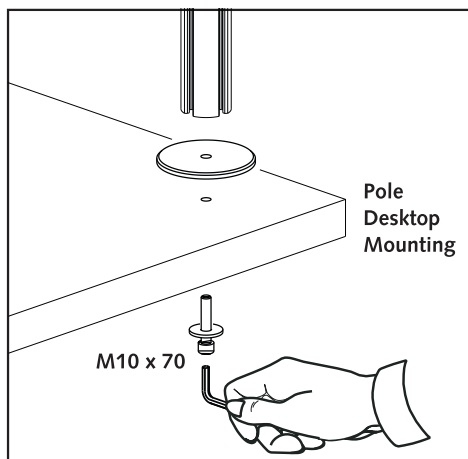
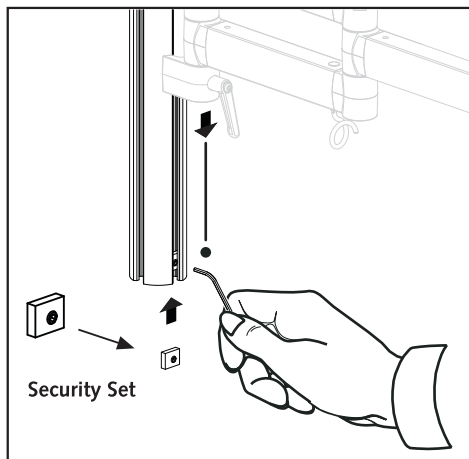
The **VESA 100 Adapter** comes with every **Monitor Arm** (#YT3230) and every **Fleximount** (#YT3231). It can be easily mounted on to the **VESA 75 Attachment** by tightening four screws. The VESA Quick Release is available as **VESA 75 Quick Release** (#YT3235) and **VESA 100 Quick Release** (#YT3236).

1. MIKA MONITOR MOUNTS (OVERVIEW)



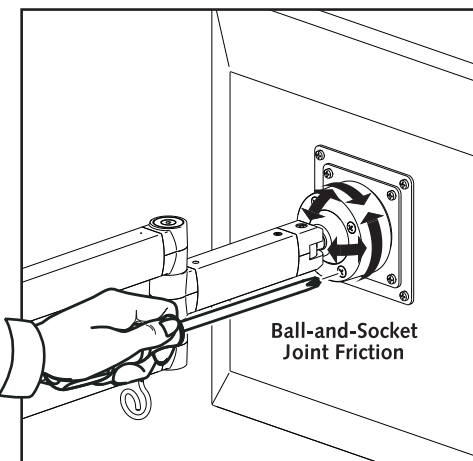
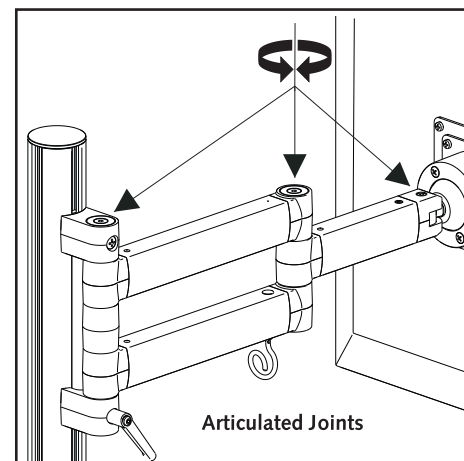
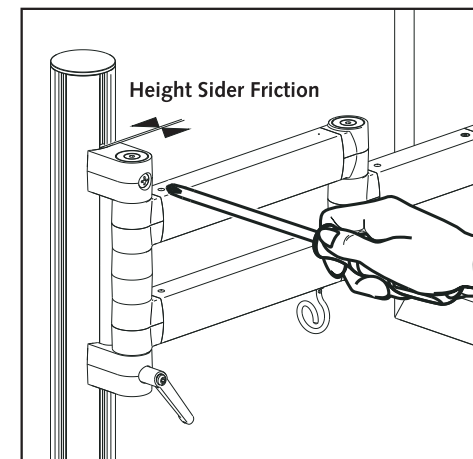
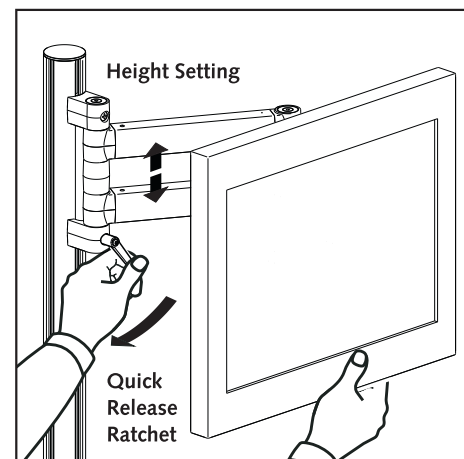
Each **Fleximount** (#YT3231) can hold monitors weighing up to 12kg (26lbs) and each **Monitor Arm** (#YT3230) up to 10kg (22lbs). You can mount up to four monitors at the same height on a single **MSS Pole**. It is available in three standard lengths: **MSS Pole 17"** (#YT3240), **MSS Pole 21"** (#YT3243) and **MSS Pole 33"** (#YT3241). The **Cable Clamps** are part of the **Pole Desktop Mounting Kit** (#YT3245).

2. DESKTOP MOUNTING



Do not forget to assemble the **Security Set** onto the Pole **first!** It comes with every Monitor Arm (#YT3230) and every Fleximount (#YT3231). You will need a **Pole Desktop Mounting Kit** (#YT3245) to mount the MSS Pole onto the desktop. The PDM-Kit contains an M10x70 screw, two washers and two cable clamps. Screw the Monitor Arm's (Fleximount's) **VESA Attachment** and the TFT Monitor before mounting the Monitor Arm (Fleximount) onto the MSS Pole.

3. MONITOR ARM ADJUSTMENTS



Set the monitor's height by loosening and tightening the Quick-Release Ratchet. The friction of the Height Slider can be adjusted by loosening and tightening the upper screw. The Articulated Joints enable to position the monitor horizontally, the viewing distance in particular. You may softly freeze the monitor's inclination by adjusting the friction of the Ball-and-Socket-Joint.