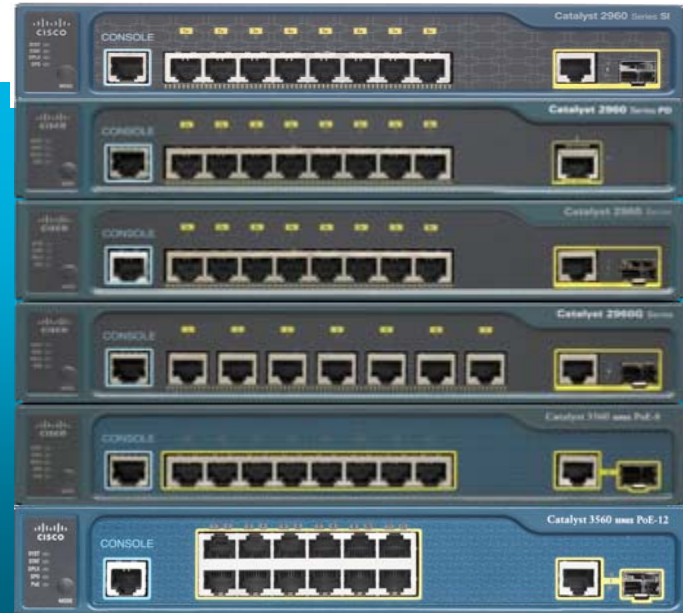




# Cisco Catalyst 3560 and Cisco Catalyst 2960 Compact Switches



# Networking Trends

- Increasing number of IP-based devices and applications requiring higher network performance, security, and reliability
- Companies with wiring constrained environments need small density switches outside the wiring closet
- Unintelligent hubs/switches cannot meet security, performance, and reliability requirements
- Cisco® Catalyst® 3560 and Cisco Catalyst 2960 Compact Switches enable advanced technology at the network edge for deployments outside the wiring closet

# Cisco Catalyst 3560 and Cisco Catalyst 2960 Compact Switches

Product ID	Product Family	Access Ports	Uplink Port	Software
WS-C2960PD-8TT-L	Cisco® Catalyst® 2960	8 10/100	1 10/100/1000 PoE Input	LAN Base
WS-C2960-8TC-S	Cisco Catalyst 2960	8 10/100	1 10/100/1000 or SFP	LAN Lite
WS-C2960-8TC-L	Cisco Catalyst 2960	8 10/100	1 10/100/1000 or SFP	LAN Base
WS-C2960G-8TC-L	Cisco Catalyst 2960	7 10/100/1000	1 10/100/1000 or SFP	LAN Base
WS-C3560-8PC-S	Cisco Catalyst 3560	8 10/100 PoE	1 10/100/1000 or SFP	IP Base
<b>New</b> WS-C3560-12PC-S	Cisco Catalyst 3560	12 10/100 PoE	1 10/100/1000 or SFP	IP Base

- Enable advanced technology at the network edge for deployments outside the wiring closet.
  - Office workspaces, micro branch offices, classrooms, cruise ships, and other wiring constrained environments
- Integrated with the existing Cisco Catalyst 3560 and Cisco Catalyst 2960 Series Switches



# Cisco Catalyst 3560 and Cisco Catalyst 2960

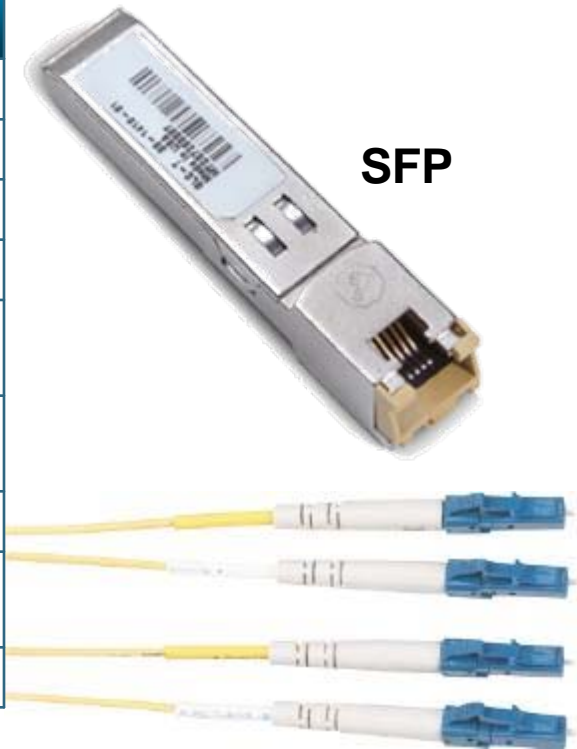
## Compact Switch Overview

- **Compact Form Factor**  
Durable, silent, and versatile design with a metal shell, no fan, small size, magnet, cable guard, and rack mount.
- **Advanced Security**  
Network Admission Control, Enhanced 802.1x, Access Control Lists, DHCP Snooping, Dynamic ARP Inspection (3560 only) and IP Source Guard (3560 only)
- **Support Advanced Technology**  
Power over Ethernet (15.4W on all 8 ports) with superior QoS to support Cisco® Unified Communications® (3560 only)  
Gigabit Ethernet access for higher performance (2960G only)
- **Simplified Management**  
Cisco® Network Assistant®, Catalyst Device Manager, Smartports, and CiscoWorks support
- **Investment Protection and Deployment Flexibility**  
Dual-purpose 10/100/1000Base-T and SFP uplink. IPv6 support in hardware. Limited Lifetime Warranty.

# Supported Small Form-Factor Pluggable Modules

SFP Transceiver	Cisco® Catalyst® 2960 LAN Base Switches	Cisco Catalyst 2960 LAN Lite Switches
GLC-LH-SM=	Yes	Yes
GLC-SX-MM=	Yes	Yes
GLC-ZX-SM=	Yes	No
GLC-T=	Yes*	Yes
GLC-BX-D= GLC-BX-U=	Yes	No
GLC-GE-100FX= GLC-FE-100FX=	Yes*	Yes
GLC-FE-100LX=	Yes	No
GLC-FE-100BX-D= GLC-FE-100BX-U=	Yes	No
CWDM SFPs	Yes	No

- GLC-T and GLC-GE-100FX are not supported on the Cisco Catalyst 2960-8TC-S, 2960-8TC-L and 2960G-8TC-L switches. For 100BASE-FX connectivity, use the GLC-FE-100FX instead for the compact switches.



**LC Connectors**

# Accessories

Product ID	Description
CBLGRD-C3560-8PC=	Cable guard for the Cisco® Catalyst® 3560-8PC
CBLGRD-C3560-12PC=	Cable guard for the Cisco Catalyst 3560-12PC
CBLGRD-C2960-8TC=	Cable guard for the Cisco Catalyst 2960-8TC
CBLGRD-C2960G-8TC=	Cable guard for the Cisco Catalyst 2960G-8TC
PWR-A=	Power Adaptor for the Cisco Catalyst 2960PD-8TT
RCKMNT-19-CMPCT=	Rack mount for the Cisco Catalyst 3560 and 2960 Compact switches

- Magnet included with switch
- Cable guard and rack mount ordered separately

# Cisco Catalyst 2940 End-of-Sale Announcement: October 2008 (One Year Transition Period)

2940-8TF-S with 100FX port



2940-8TT-S



Transition

2960 LAN Base compact



WS-C2960-8TC-L

2960 LAN Lite compact



WS-C2960-8TC-S

## Advantages of Cisco® Catalyst® 2960:

- Access to future Cisco IOS enhancements
- Dual-purpose GE uplink
- Scalable and secure management with lower TCO
- Improve QoS management
- SSH, SSL support

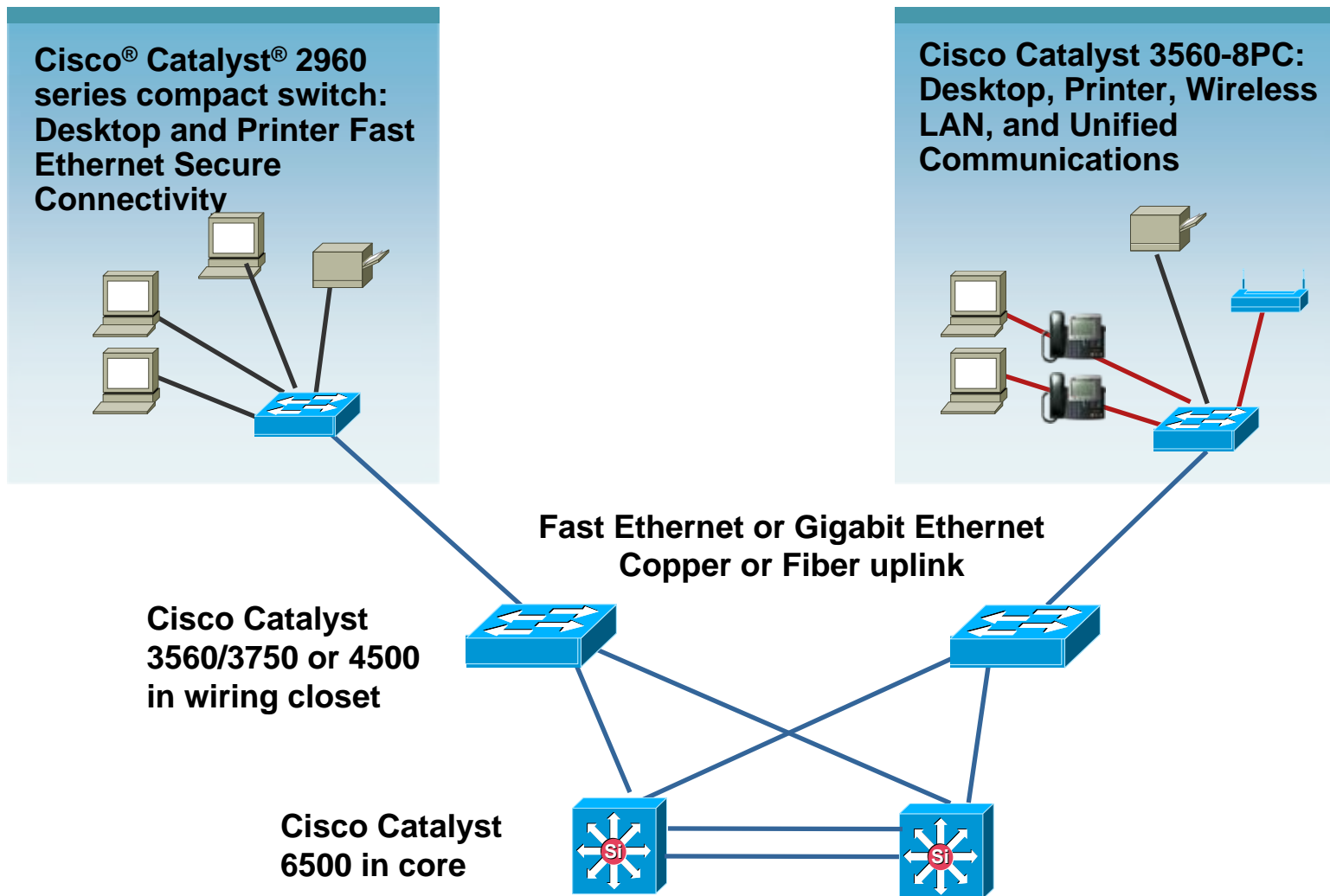
# Compact Design

- **Small size (H x W x D)**  
4.4cm x 27cm x 16-23cm
- **Flexible wall and under the desk mounting**
- **Durable metal shell**
- **Cable guard** —————→
- **Internal power supply and right angle power cord**
- **Passive cooling (no fan)**
- **Magnet included**
- **Security locking slot** —————→
- **19 inch rack mount option**





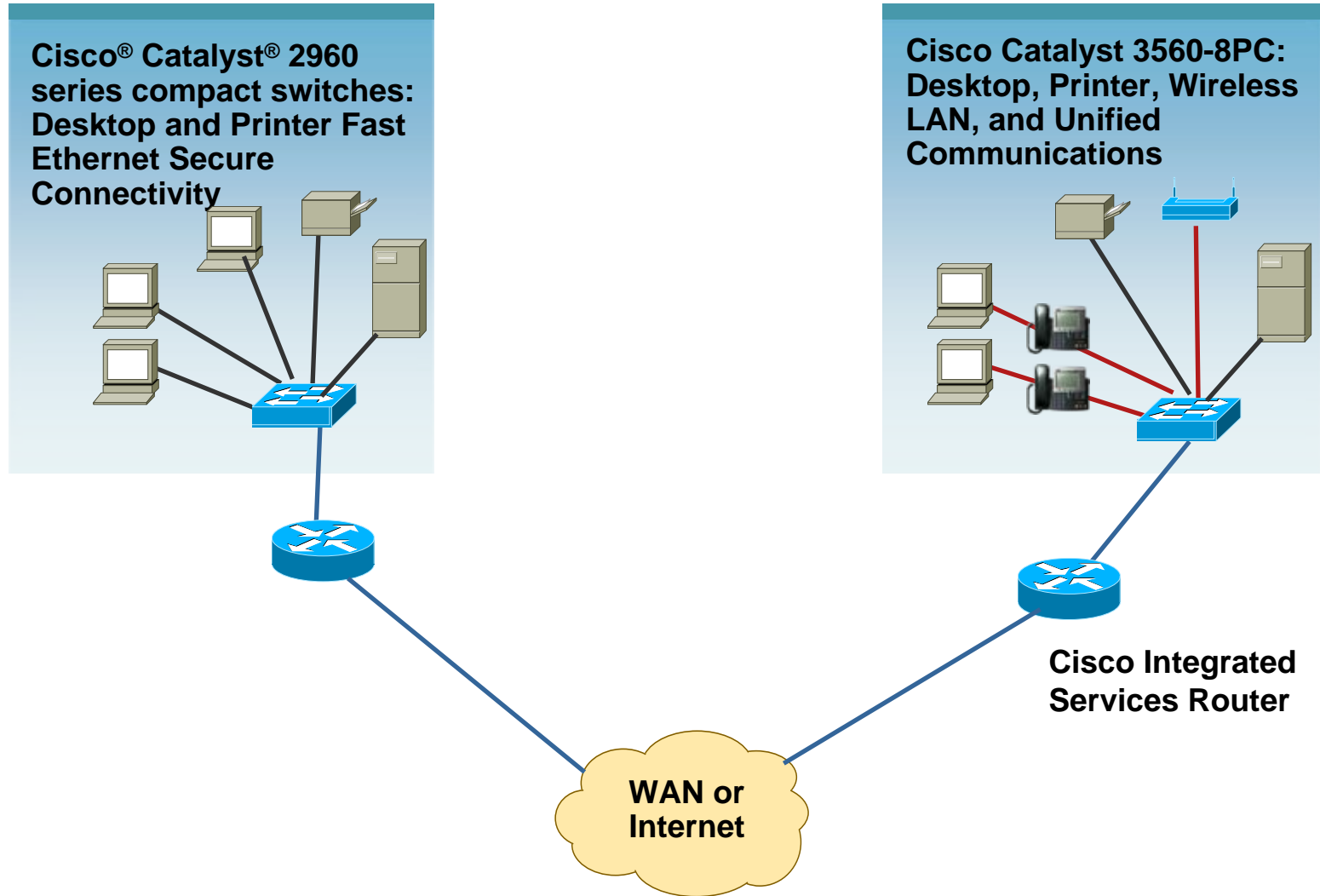
# Office Workspace Deployment Scenario



# Benefits for Office Workspace

- Enable intelligent services in conference rooms, desk islands, and other locations with limited cabling from the wiring closet
- Improve application performance by removing hubs and unmanaged switches from network
- Deliver advanced security such as Network Admission Control to the enterprise network edge
- Provide PoE to IP phones and replace power bricks, power injectors or PoE mid-span devices
- Deliver Cisco® Unified Communications® with superior Quality of Service
- Provide Gigabit Ethernet to the end user

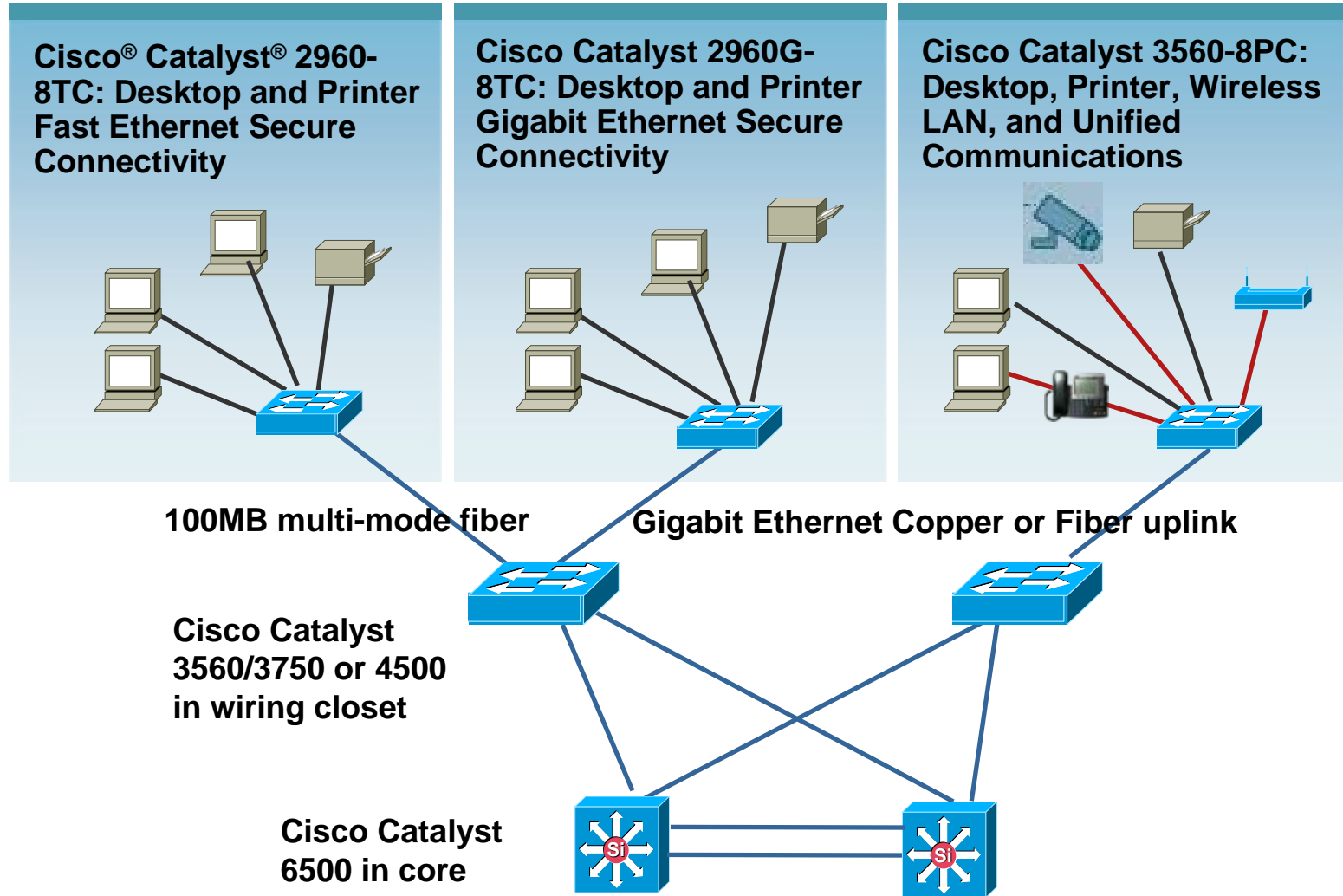
# Micro Branch Deployment Scenario



# Benefits for Micro Branch Offices

- Enable scalable intelligent services for customers with large number of branch offices each with only a few end users
- Improve application performance by removing hubs and unmanaged switches from network
- Provide PoE to IP phones, wireless access points, IP video cameras and replace power bricks, power injectors or PoE mid-span devices
- Deliver Cisco® Unified Communications® with superior Quality of Service

# Classroom Deployment Scenario



# Benefits for Classrooms

- Improve application performance by removing hubs and unmanaged switches from network
- Provide PoE to an IP phone, wireless access point, and IP video camera.
- Replace power bricks, power injectors or PoE mid-span devices for higher reliability
- Deliver Cisco® Unified Communications® with superior Quality of Service
- Supports Fast Ethernet and Gigabit Ethernet uplink over both copper and fiber for investment protection

# More Information

- Supported in Cisco® Network Assistant® starting with version 5.0  
[www.cisco.com/go/cna](http://www.cisco.com/go/cna)
- Supported in CiscoWorks LMS
- For more information on the Cisco® Catalyst® 3560 Series Switches go to: [www.cisco.com/go/catalyst3560](http://www.cisco.com/go/catalyst3560)
- For more information on the Catalyst 2960 Series Switches go to: [www.cisco.com/go/catalyst2960](http://www.cisco.com/go/catalyst2960)

# Cisco Catalyst 3560 and Cisco Catalyst 2960 Compact Switch Summary

- Designed for end-user environment, outside the wiring closet
- Expand enhanced security to the enterprise network edge
- Enable advanced technologies such as Cisco® Unified Communications®, Wireless LAN, and IP video cameras
- Lower Total Cost of Ownership with simplified management
- Improve performance with Gigabit Ethernet access ports and flexible dual-purpose uplink





